

# Carbon Reduction and Renewable Energy Services

Investment, Technical Consultancy and Project Management expertise  
to support you towards Net Zero and increase efficiencies

**As the demand for sustainable energy solutions grows and with utility costs rising, gbpartnerships is at the forefront of helping organisations reduce costs, manage consumption to make savings, and reduce carbon emissions to move towards Net Zero targets.**

Our investment, technical consultancy and project management expertise in energy efficiency and renewable energy generation is designed to support your journey towards sustainability whilst driving operational efficiencies.

## Leading the Way in Sustainability

At gbpartnerships, we are committed to creating a sustainable future through responsible business practices.

Our team's extensive knowledge in the built environment, renewable and energy saving generation technologies, and approach to sustainable development, have reduced emissions across client estates and delivered award winning projects that include ultra-low energy Passivhaus, BREEAM 'Excellent' & 'Very Good' buildings, and renewable energy solutions.

Building on our proven experience, we are now delivering sustainable energy projects across the UK, utilising technologies for public and private sector estates, landowners, and communities.

Our services extend to commercial and industrial sites, supporting projects on buildings and land.



Foleshill Health Centre in Coventry, the first healthcare building in the UK to be built to international Passivhaus standards.

# How We Can Help You

**We tailor our services to meet your specific needs, focusing on delivering cost savings, efficiency gains, and sustainable outcomes.**

Let us help you identify and capitalise on opportunities, both direct and indirect, to reduce your carbon footprint, generate cost savings, while driving your organisation toward a greener future.

We can work with you from feasibility to design, delivery to monitoring, and ongoing maintenance of the installed asset.

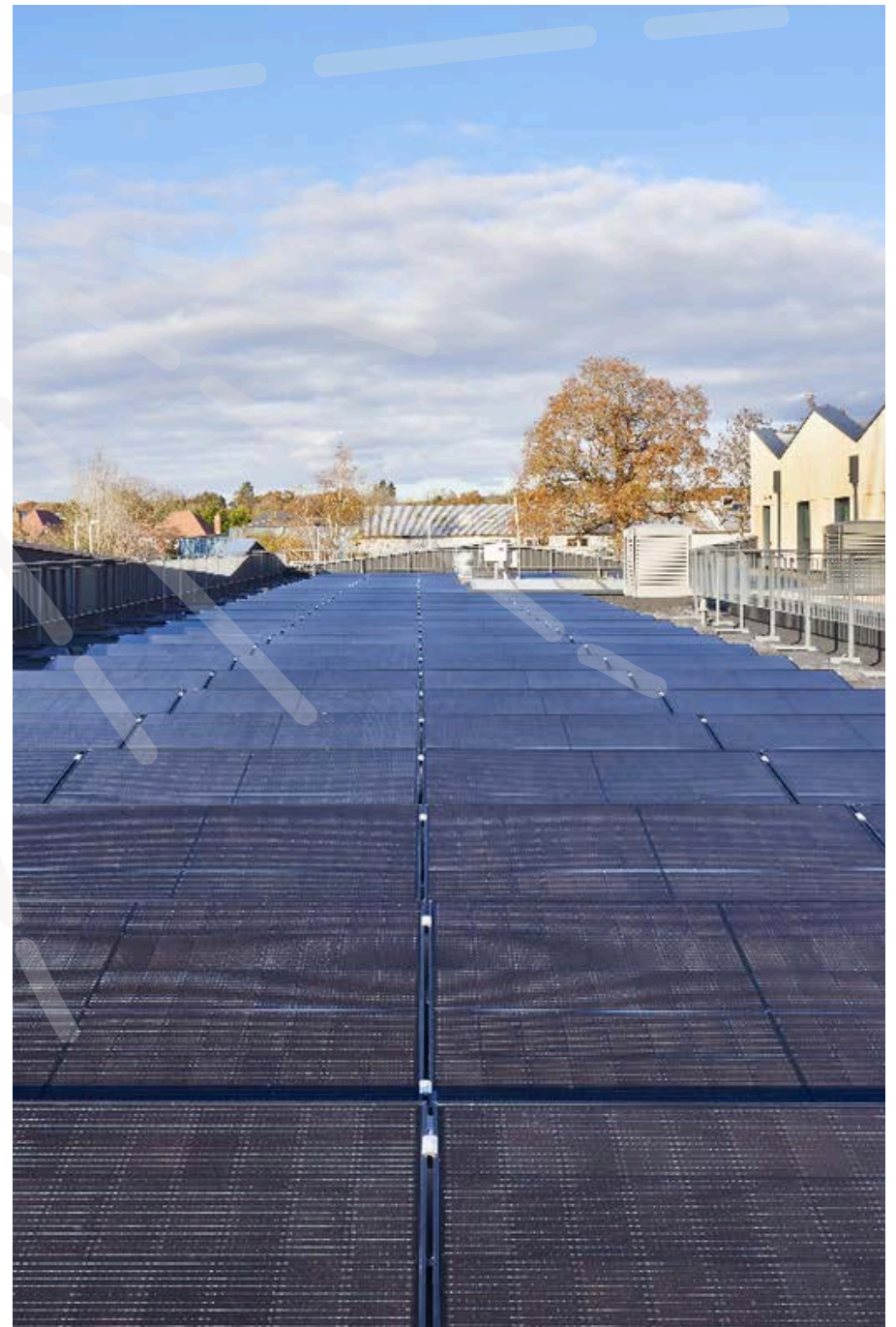
**Arrange an informal chat to discuss how we can help you on your journey.**

Contact Russ Thompson via email to learn more about our services or to discuss your project needs.

Email: [sustainability@gbpartnerships.co.uk](mailto:sustainability@gbpartnerships.co.uk)



SCAN ME



Edenbridge Memorial Health Centre, Kent, BREEAM Excellent, with a large array of photovoltaic panels on the roof providing onsite energy generation.

# A Comprehensive Service Offering

Our 'end-to-end' carbon reduction and renewable energy services are designed to help you:

## Generate New Sustainable Energy



Develop and deploy renewable energy technologies.

Design, fund and install renewable energy technologies such as Solar photovoltaic (PV) arrays, battery storage, heat pumps and wind turbines.

## Increase Efficiency



Enhance energy efficiency through advanced design and technology solutions:

Improve building efficiency and energy management control;

Reduce wastage and increase efficiency through replacement and introducing alternative innovative measures.

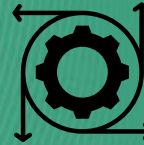
## Provide Funding



For projects that require capital, gbpartnerships can invest in your project and offer alternative solutions that work without the need for upfront costs.

All or part funded solutions can deliver low cost energy, revenue generation, and reduce exposure to fluctuating market prices providing lasting cost savings.

## Deliver Flexibility



Whether a site is owned or leased, gbpartnerships can deliver projects that respond to your needs in terms of ownership or occupation, through renewable energy technology solutions, both onsite and offsite.

## Reduce Consumption & Emissions



gbpartnerships can identify and implement strategies to minimise energy use and lower carbon emissions.

Improve visibility on metering and monitoring.

Provide SMART solutions to manage energy consumption.

Affect change to manage reductions and deliver savings.

## Replace Fossil Fuel Dependency



Transition from fossil fuels to sustainable, renewable energy sources.

From feasibility to replacing old plant and equipment.

Upgrade to more sustainably solutions, and embrace newer technologies, for a more efficient future.

*"if you can't measure it, you can't improve it."*

# A Proven Track Record

We've successfully supported clients across various sectors in their quest to decarbonise and move towards becoming more sustainable and Net Zero targets. Some of our recent projects include:

## Case Study: Worthing Heat Network Project

**Client:** Worthing Borough Council  
**Project status:** Financial Close achieved April 2024  
Construction phase 1, July 2024 - 2025  
**Services provided:** Project Management services

We provided project management services for the procurement and development of the first phase of a Heat Network across Worthing, supporting Adur & Worthing Councils in their ambitious 10-year decarbonisation plan.

We worked with the Council to manage and procure a heat mapping and feasibility study, and to see the project through the subsequent detailed project development and commercialisation stages. By connecting buildings to the district heating network it will remove the need to provide heat and hot water from fossil fuels, instead providing these services from the new sustainable heat source.



## Case Study: Dartmouth Health & Wellbeing Centre

**Client:** Torbay and South Devon NHS Foundation Trust  
**Project status:** Completed, opened April 2023  
**Services provided:** Property Developer and Development Management

We delivered a new state-of-the-art c.£5m Health & Wellbeing Centre with a wide range of services under one roof. The impressive multi-purpose building development using green architecture to create the smart design, was officially opened by the HM Lord-Lieutenant of Devon in April 2023.

A wide range of sustainable features included a photovoltaic panel array on the roof generating electricity for the building.



# A Proven Track Record

We've successfully supported clients across various sectors in their quest to decarbonise and move towards becoming more sustainable and Net Zero targets. Some of our recent projects include:

## Case Study: Edenbridge Memorial Health Centre

**Client:** Kent Community Health NHS Foundation Trust  
**Project status:** Completed, opened November 2023  
**Services provided:** Developer – design, build and finance

Our team developed a comprehensive c.£9m facility with a wide range of primary care facilities and services. The integrated healthcare hub had a focus on sustainability with a large array of photovoltaic panels on the roof providing onsite energy generation.

The building was designed to achieve a building certification of BREEAM very good; a BRE rating and world leading validation system for a more sustainable built environment.



## Case Study: Foleshill Health Centre, Coventry

**Client:** CHP and NHS Coventry and Warwickshire CCG  
**Project status:** Completed, opened August 2021  
**Services provided:** Development Management services, leading on the development, procurement, and construction management.

Our project management services supported the delivery of the first healthcare building in the UK built to the international Passivhaus standards, setting a new precedent in low-energy building design.

The building benefited from superior insulation that exceeded building regulation requirements by 40%, heat recovery ventilation system, triple glazing, brise soleil, night time cooling, and PV panels providing onsite generation - meaning there were no fossil fuels used on site. Measures installed achieved an EPC energy efficiency 'A' rating of 12 which is close to net zero.





[www.gbpartnerships.co.uk](http://www.gbpartnerships.co.uk)

[www.linkedin.com/showcase/gbpartnerships-consult](http://www.linkedin.com/showcase/gbpartnerships-consult)



**Arrange an informal chat to discuss how we can help you on your journey.**

Contact Russ Thompson via email to learn more about our services or to discuss your project needs.

Email: [sustainability@gbpartnerships.co.uk](mailto:sustainability@gbpartnerships.co.uk)

